



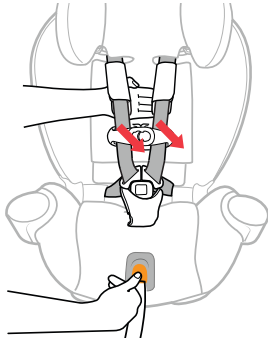
⚠ WARNING: Avoid serious injury or death to your child. Never use your OneFit Child Restraint without the softgoods in place. You must read and understand the Softgoods Removal instructions and the instructions in the User Guide. If you do not understand these instructions, **DO NOT** attempt to remove the softgoods, **STOP** and call Chicco at 1-877-424-4226.

SS0034E_01

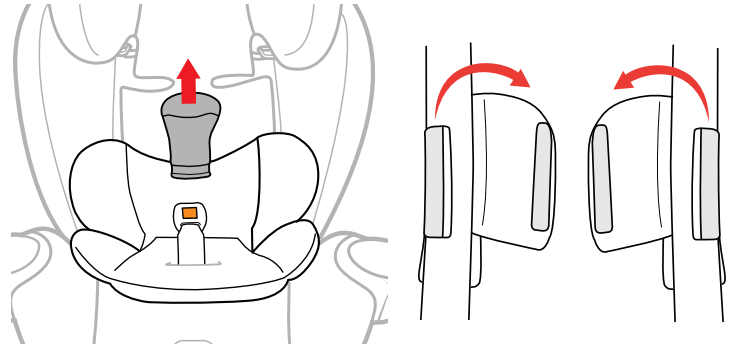
INSTRUCTIONS: OneFit Softgoods Removal/Installation

IMPORTANT: Please also refer to the instructions that came with your product.

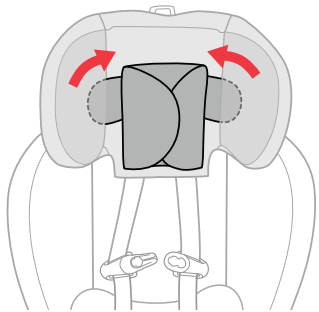
SOFTGOODS REMOVAL:



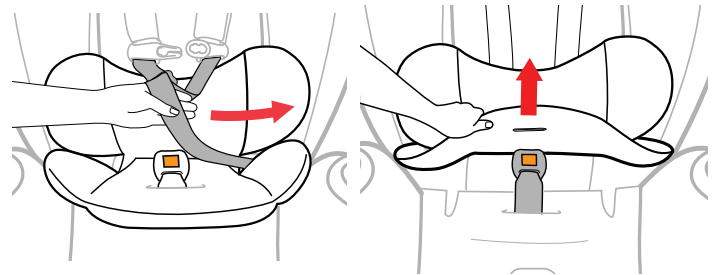
1 **Completely loosen Harness Straps** by pressing Harness Release Button on the front of the Child Restraint and pulling out on both of the Harness Straps. Then unbuckle the Chest Clip and Harness Buckle.



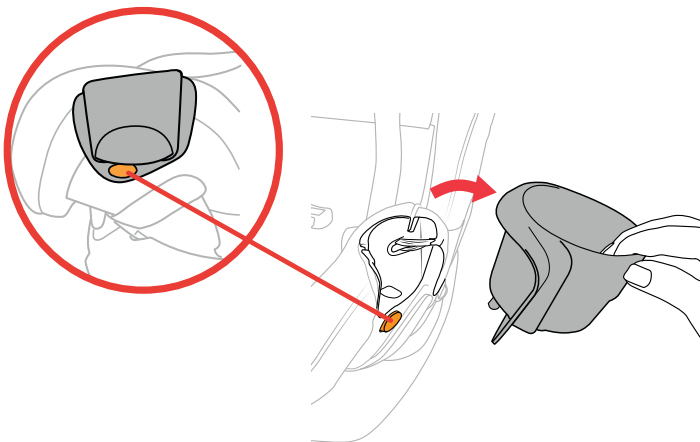
2 **Remove the Crotch Strap Pad** by pulling the Crotch Strap Pad up and off the Harness Buckle, as shown. Also remove the Shoulder Pads.



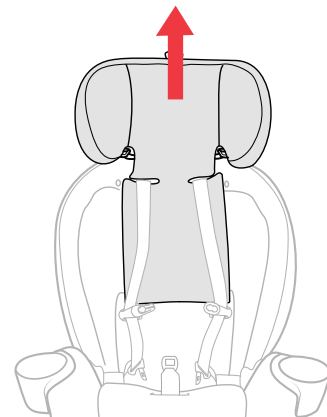
3 **Pull both Headrest Insert flaps forward** to remove the Insert tongues from the side pockets on the Headrest.



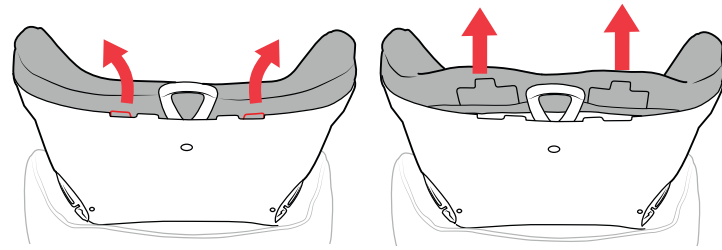
4 **Remove the Newborn Positioner** by pulling the Harness Straps out through the side openings on the pad and threading the Harness Buckle down through the slot in the pad.



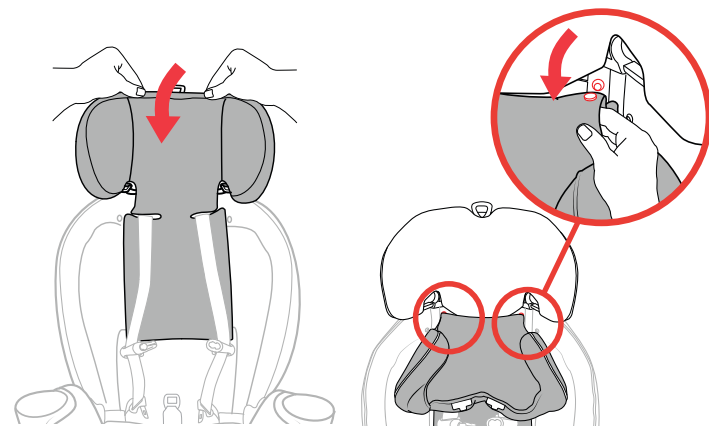
5 **Remove BOTH of the Cup Holders** by pressing the orange button located on the bottom edge and lifting up.



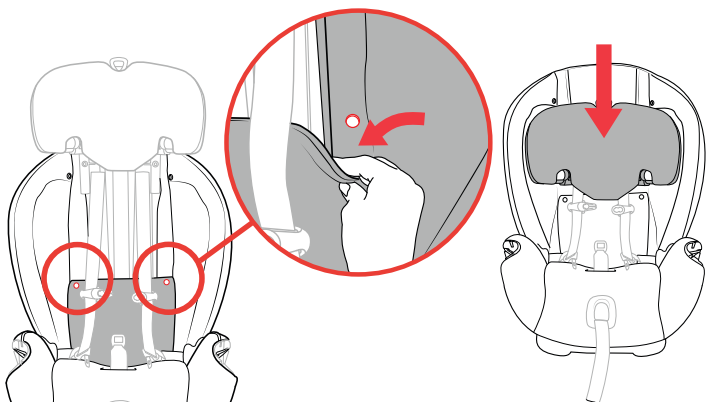
6 **Raise the Headrest to the highest position.**



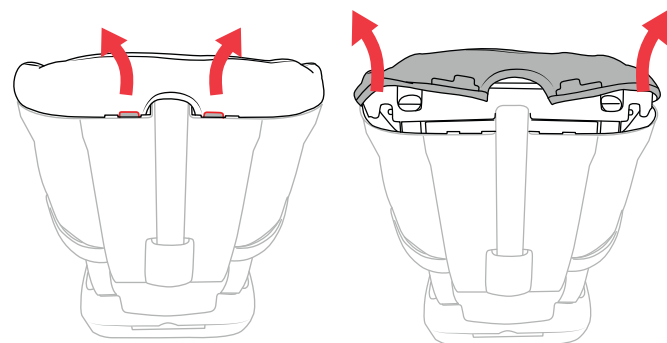
7 At the back of the Headrest, pull back gently on both of the plastic tabs at the top of the Headrest and pull up on the Headrest fabric.



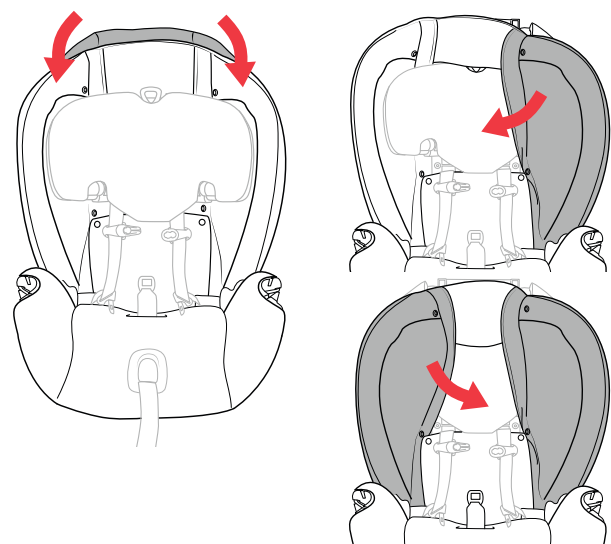
8 With the Child Restraint facing you, gently pull the fabric UP and AWAY from the Headrest, then guide it off of the Headrest frame. Undo both snap buttons holding the Headrest fabric in place at the bottom of the Headrest frame, as shown.



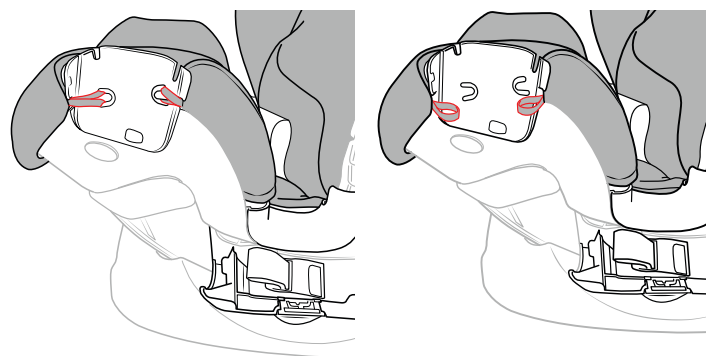
9 Undo both snap buttons on the inside of the Seat Pad, as shown. Then lower the Headrest to the lowest position.



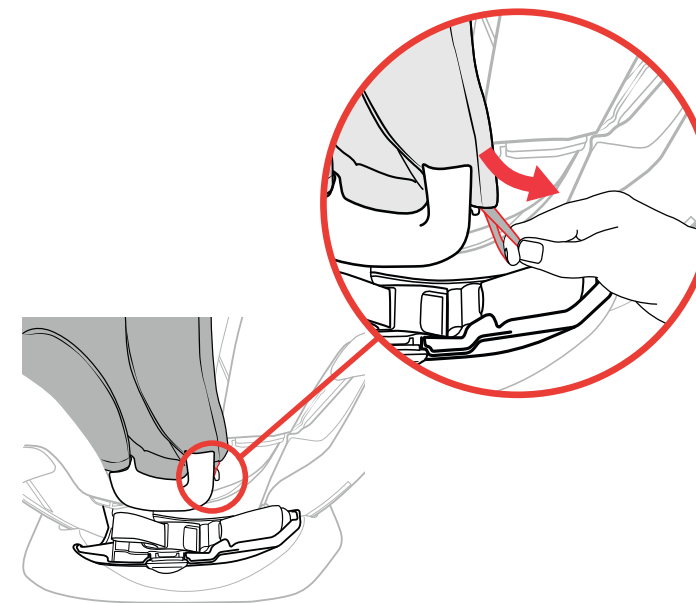
10 At the top edge of the seat back, pull back gently on both of the plastic tabs and lift up fabric. Remove the fabric from the top edge of the seat back.



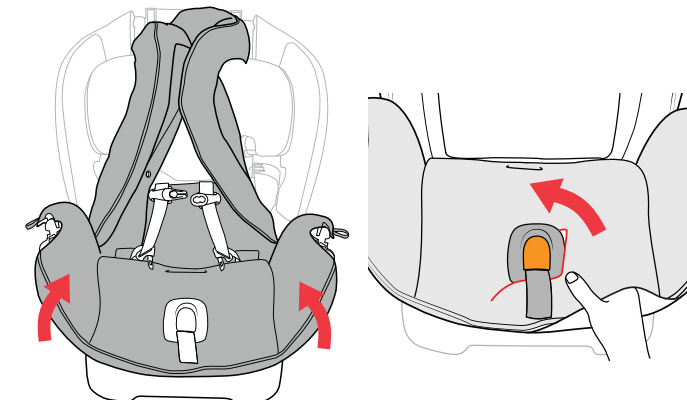
11 With the Child Restraint facing you, pull gently forward on the fabric. Guide it off of the Seat Frame and then around the Headrest frame.



12 Release both elastic straps located inside the Cup Holder attachment cutout. Repeat this step for the other side.



13 On one side of the Child Restraint open the LATCH storage compartment. Locate and unhook the elastic loop, as shown. Pull the fabric edge out and around the orange Lap Belt Guide.



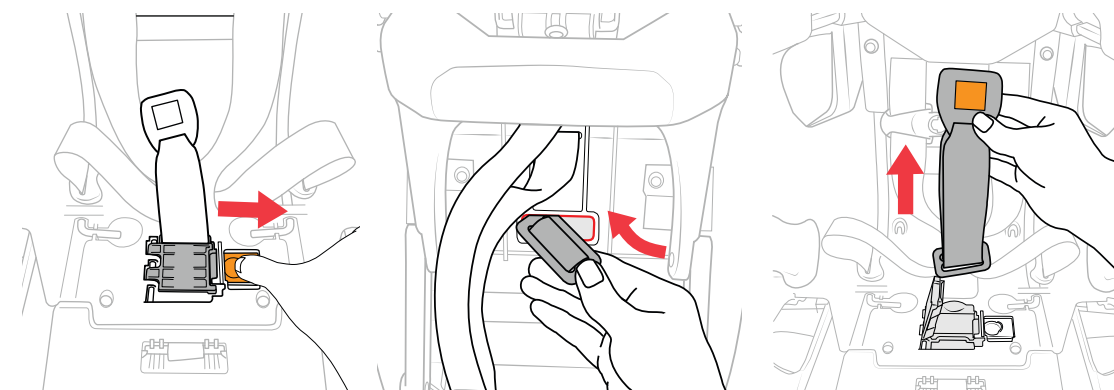
14 Thread the Harness Buckle down through the slot in the pad and pull the fabric up around the front and sides of the Seat Frame. Then carefully pull the fabric around the Harness Adjuster Strap Cover and remove the Seat Bottom Pad. The plastic Harness Adjuster Strap Cover is NOT removable. Remove the fabric.

Cleaning Instructions:

Fabrics may be hand washed using mild soap and water, or machine washed in cold water on delicate cycle using mild detergent. Hang to dry. **DO NOT BLEACH.** Please consult your product manual for additional care and maintenance instructions.

DO NOT remove the Harness Straps. Contact Chicco Customer Service at **1-877-424-4226** for assistance or additional information.

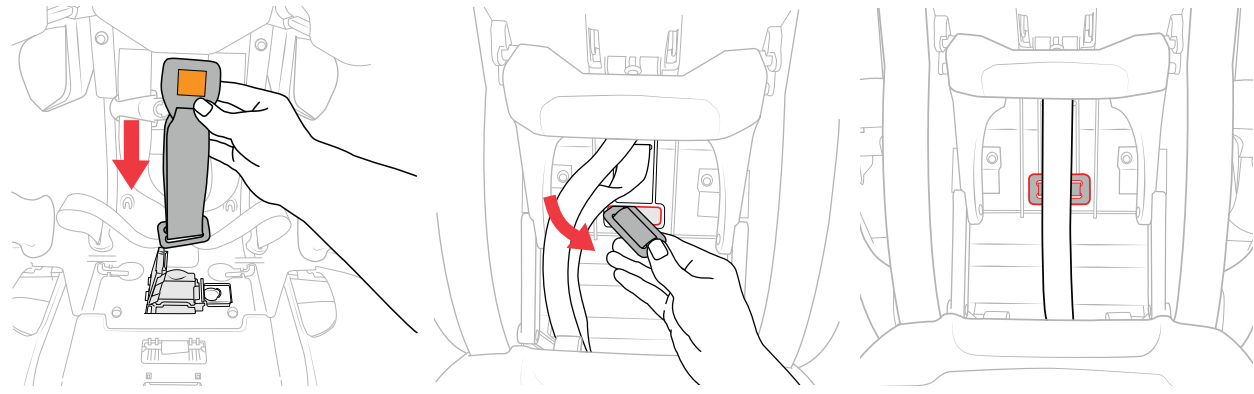
CROTCH STRAP REMOVAL:



15 Open the Crotch Strap Lock compartment and fully recline the seat (Position 1). Tilt the Child Restraint back and locate the crotch strap metal bar underneath the seat. Turn metal bar slightly and push the corner through the slot. Work the metal bar through the slot while pulling the Crotch Strap out on the other side.

NEVER use Child Restraint without the Crotch Strap installed.

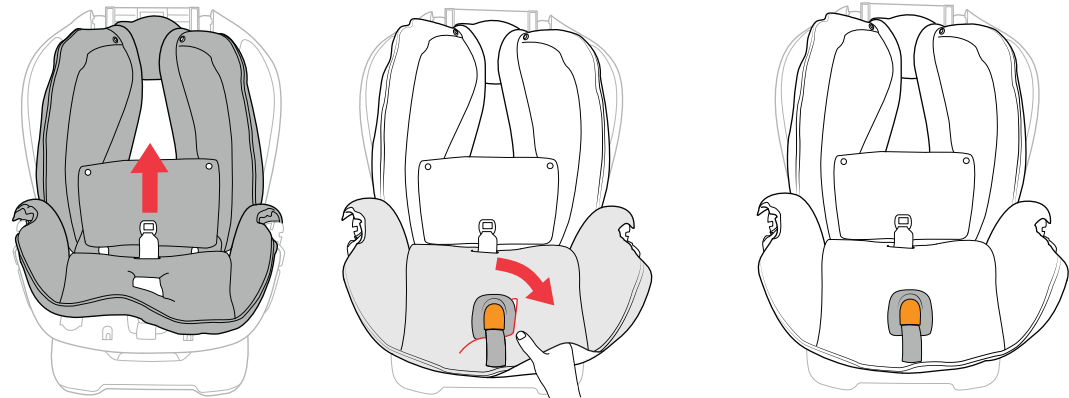
CROTCH STRAP INSTALLATION:



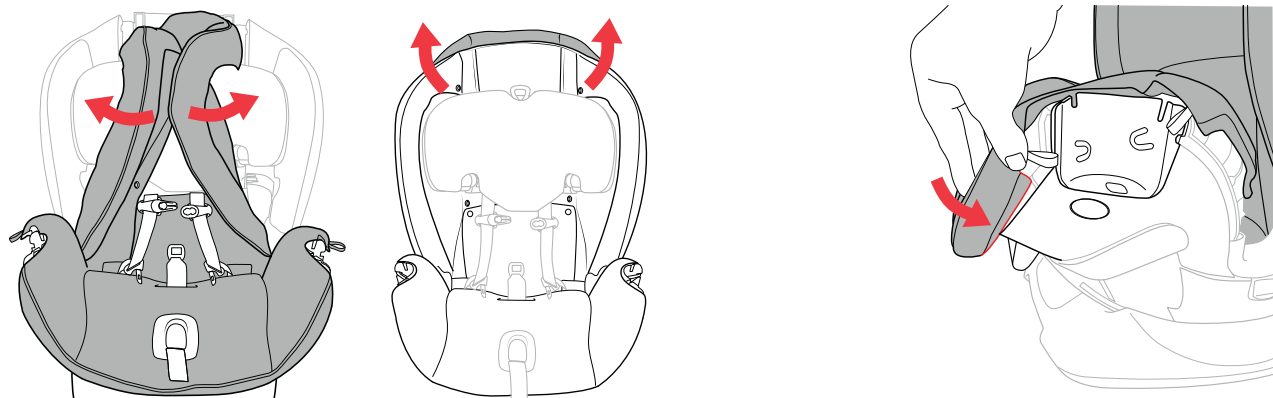
16 Guide one corner of the metal bar through slot in the Crotch Strap Lock compartment. With the seat fully reclined (Position 1), pull the metal bar through the slot from underneath the seat. Make sure the metal bar lays flat on the bottom of the seat, as shown.

NEVER use Child Restraint without the Crotch Strap installed.

SOFTGOODS INSTALL:

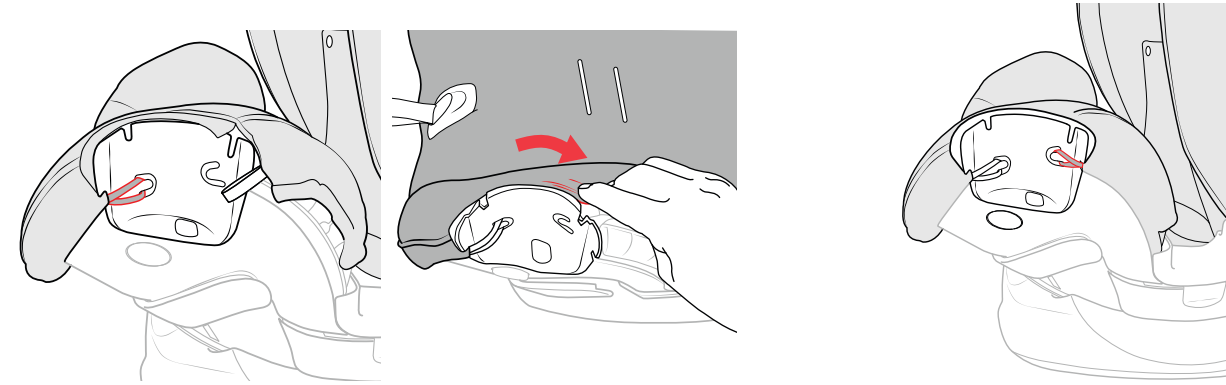


17 Make sure the Headrest is in the lowest position and open the LATCH storage compartments. Place the Seat Pad onto the Seat Frame and thread the Harness Buckle up through the correct slot in the Seat Pad. Then carefully guide the fabric around the Harness Adjuster Strap Cover.



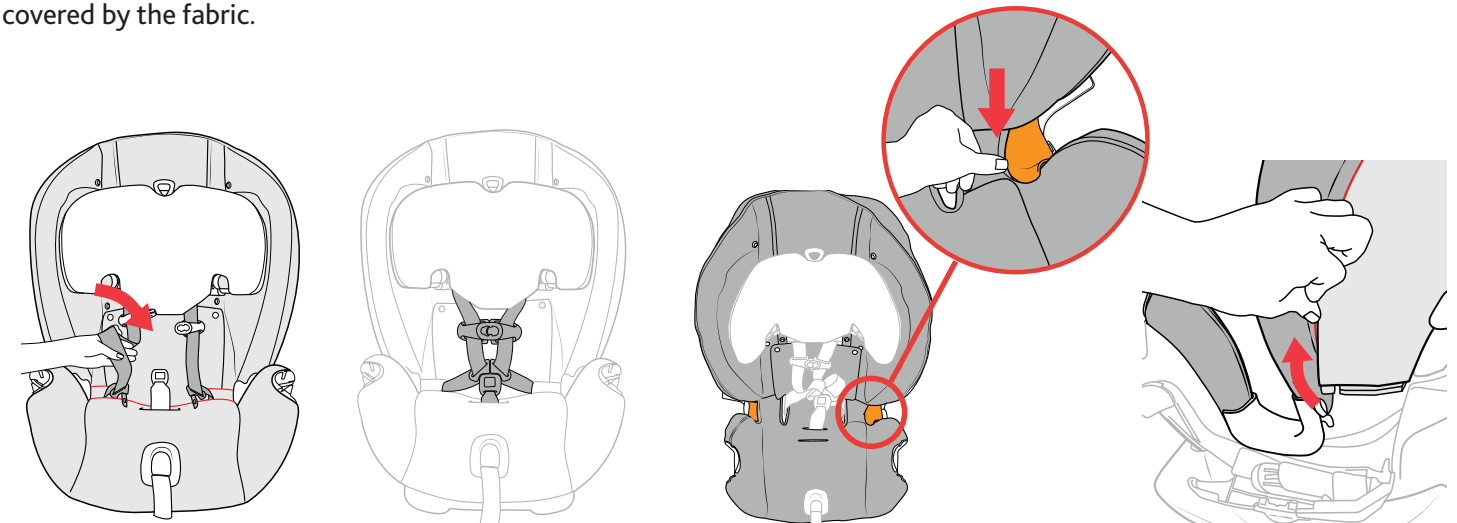
18 Pull the fabric down and around the front edge and insert the Headrest into the top opening in the fabric. Pull the fabric around the back of the Seat Frame.

19 At the front of the Child Restraint start tucking the fabric edge into the outside groove following it up the side to the Cup Holder attachment.



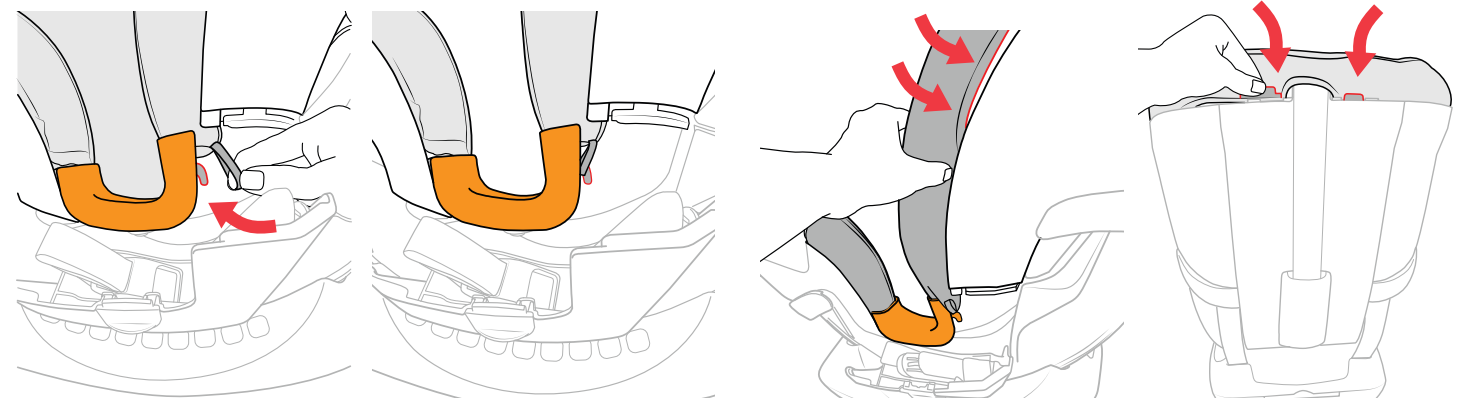
20 While pulling on the front elastic strap, press in on the fabric guiding it into the groove. Wrap the elastic strap around the post inside the Cup Holder cutout. Tuck the fabric edge around the outside Cup Holder frame, making sure the grooves in the Cup Holder frame are not covered by the fabric.

21 Pull on the other elastic strap while guiding the fabric down and around the Cup Holder edge and into the notch. Wrap the elastic strap around the post and repeat for the other side.



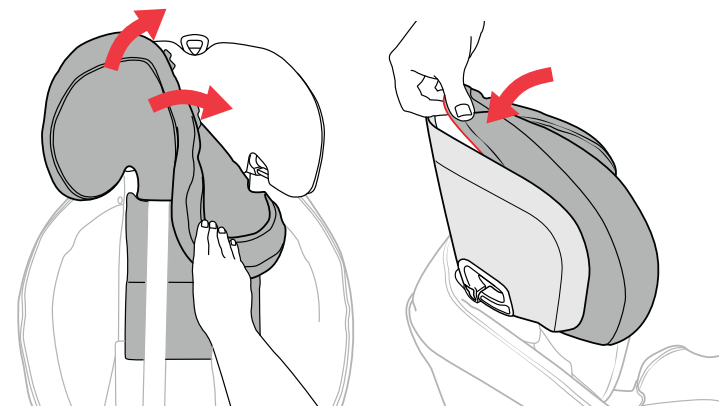
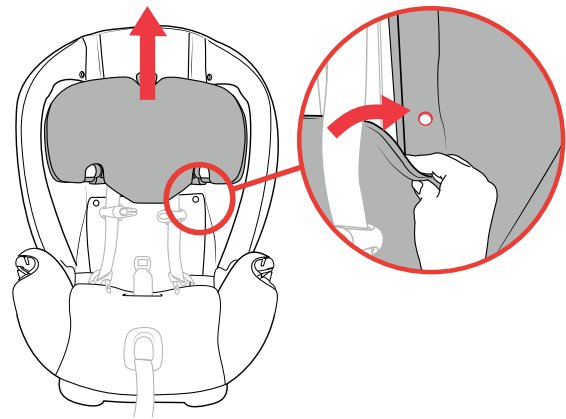
22 Pull the Harness Straps through the openings in the fabric and attach the Chest Clip and the Harness Buckle.

23 Press and push the fabric around the inside edge of the orange Lap Belt Guide. If this becomes difficult, the blunt end of a pen or something similar may be used to help tuck the fabric around the edge.

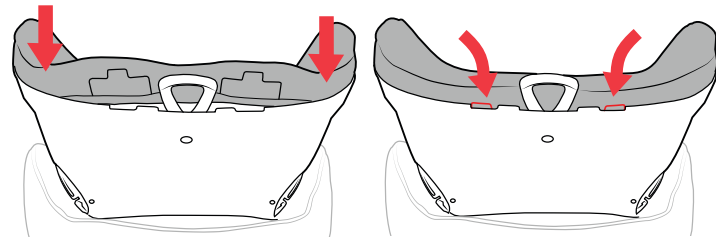


24 Locate the elastic strap near the back of the Lap Belt Guide, pull on the strap and tuck the fabric around the upper edge of the Lap Belt Guide. Wrap the elastic strap around the post inside the LATCH storage compartment. Close the compartment and repeat for the other side.

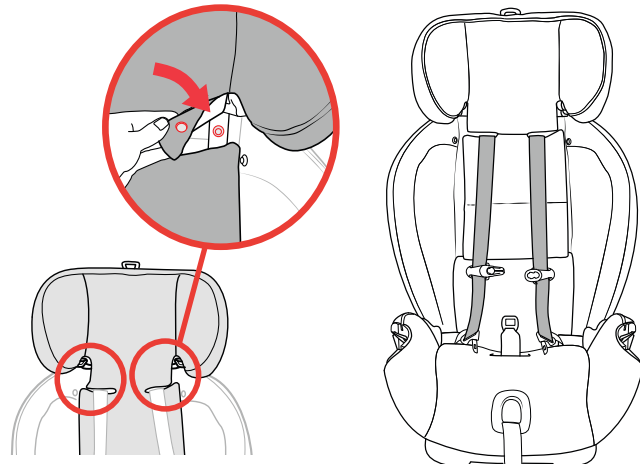
25 Tuck and press the fabric into both side edges of the Child Restraint. At the top of edge of the Child Restraint, locate the plastic tabs. Press both tabs into the top edge until they stay in position under the tab cutouts.



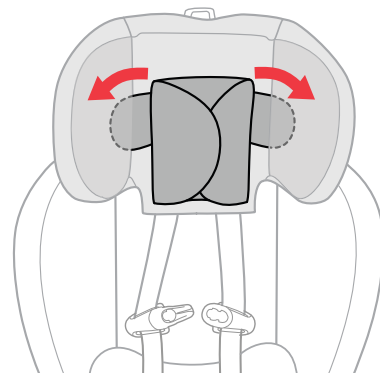
26 Attach both snap buttons on the seat fabric, as shown. Pull the Headrest up to the highest position. Slide the Headrest fabric onto and around both sides of the Headrest frame. Tuck the fabric edges into the Headrest frame edges, as shown.



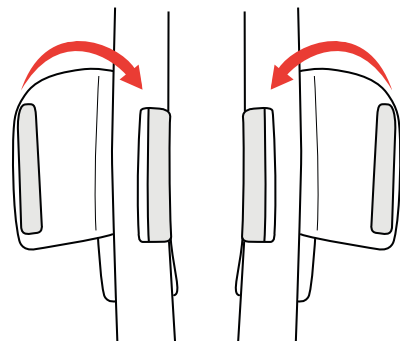
27 At the back edge of the Headrest locate the plastic tabs. Press them into the Headrest frame until they click into position, as shown.



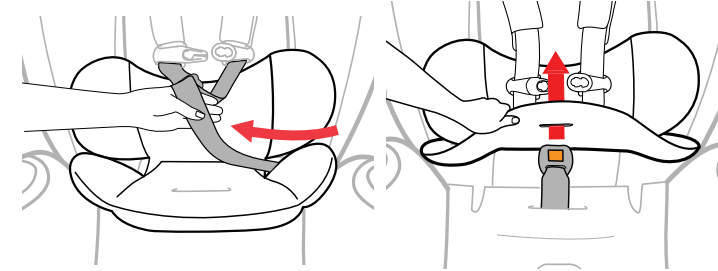
28 Attach both snap buttons on the Headrest fabric to the Headrest frame, as shown. Then pull the Harness Straps around to lay on top of the Headrest fabric.



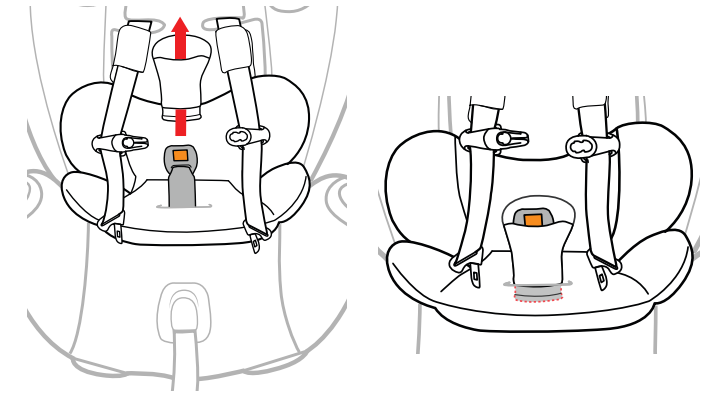
29 Slide both Headrest Insert tongues into the side pockets on the Headrest.



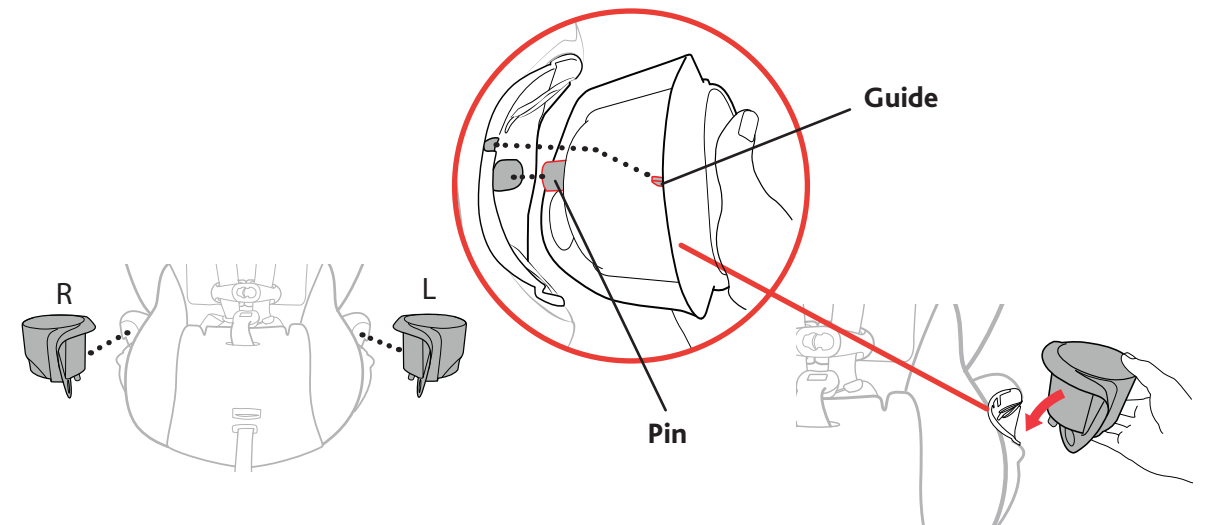
30 If desired, attach both sides of the Hook and Loop Tabs on the outside of the Shoulder Pad, as shown. Repeat for the other Shoulder Pad.



31 For child weighing between 5 and 11 lbs (2.3 and 5 kg), place the Newborn Positioner on the Child Restraint. Thread the Harness Straps into the side openings on the insert pad and thread the Harness Buckle up into the slot in the pad.



32 If desired, attach the Crotch Strap Pad. Thread the Crotch Strap Pad tongue down into the same opening as the Crotch Strap.



33 Attach the Cup Holders to the Child Restraint. Match the "R" and "L" Cup Holders to the Child Restraint, as shown. Make sure the fabric is tucked in along the Child Restraint lip to allow the Cup Holder to be attached properly. Line up the Cup Holder pin and the two guides with the openings on the Child Restraint, as shown. Push in and then push down on the Cup Holder until it clicks into place. Repeat for the other side.

Learn how to
INSTALL & USE
The **OneFit** Car Seat



ChiccoOnefit.com