

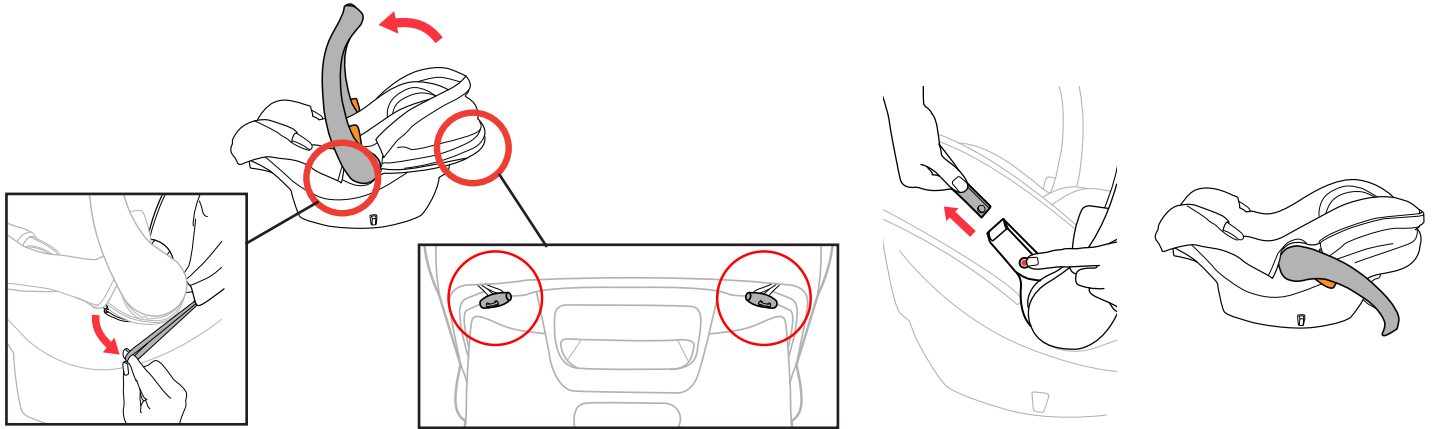


⚠️WARNING: Avoid serious injury or death to your child. Never use your KeyFit 35 Child Restraint without the softgoods in place. You must read and understand the Softgood Removal instructions and the instructions in the User Guide. If you do not understand these instructions, **DO NOT** attempt to remove the softgoods, **STOP** and call Chicco at 1-877-424-4226.

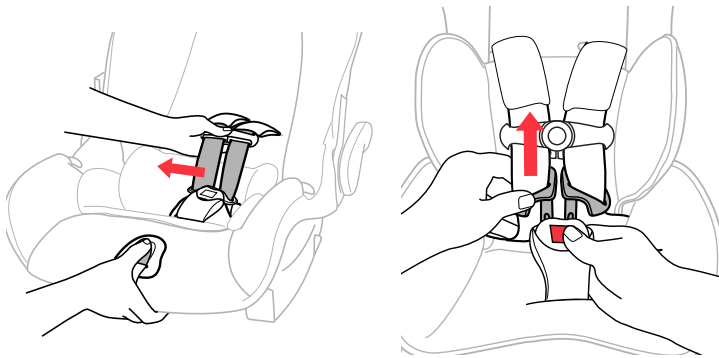
SS0030E_02

INSTRUCTIONS: KeyFit 35 Softgood Removal

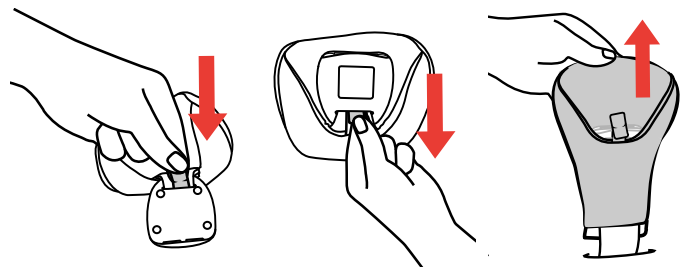
IMPORTANT: Please also refer to the instructions that came with your product.



1 Rotate the Carry Handle up into the carry position. To remove the Canopy, unhook the Elastic Straps on both sides, below the Carry Handle hub. Undo both Toggles on the back of the Child Restraint. On one side of the Canopy, press the button on the Canopy Mount and pull out the bow. Repeat for the other side of the Canopy and remove. Then rotate the Carry Handle back into stationary position. Refer to User Guide if needed.

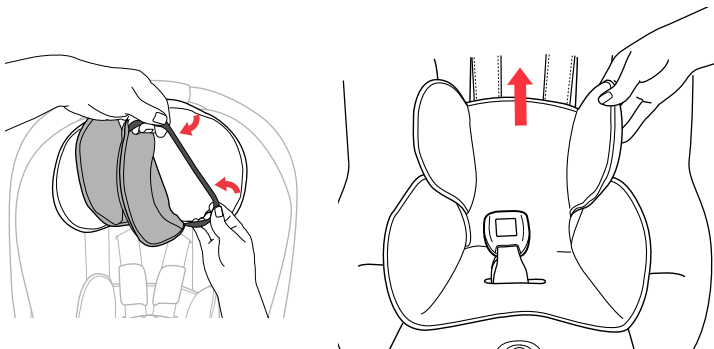


2 Press the Harness Adjuster Button and loosen the Harness Straps. Undo the buckle and chest clips.

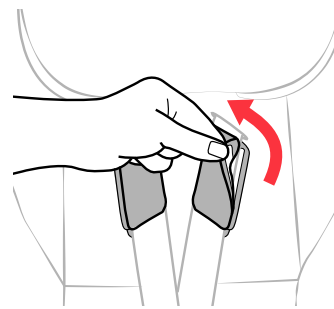


3 Remove the Crotch Strap Pad by pushing the fabric Tab through the slot on the BACK of the Harness Buckle. Then pull Tab out of the FRONT and remove Crotch Strap Pad.

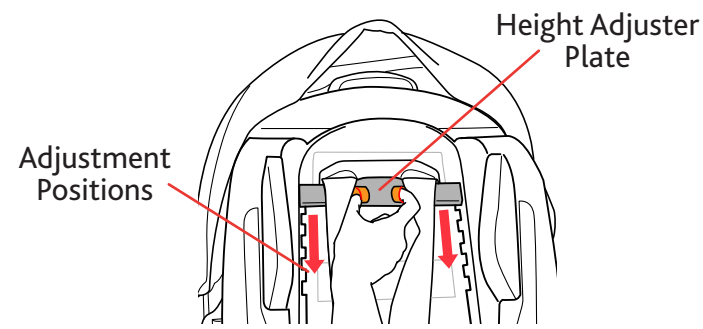
IMPORTANT! If Crotch Strap Pad prevents harness from properly fitting small Infant, it should be removed.



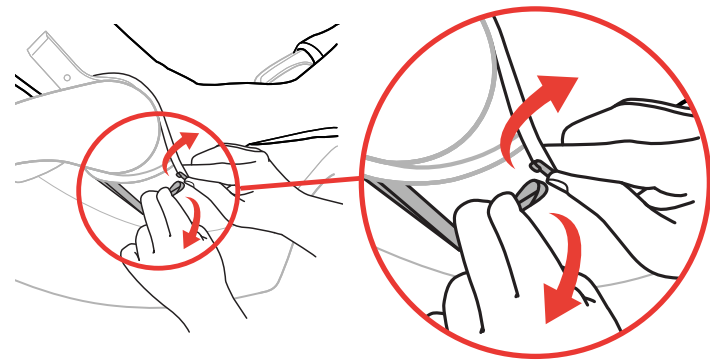
4 Remove the optional Head Rest Insert and Newborn Positioner. Refer to User Guide if needed.



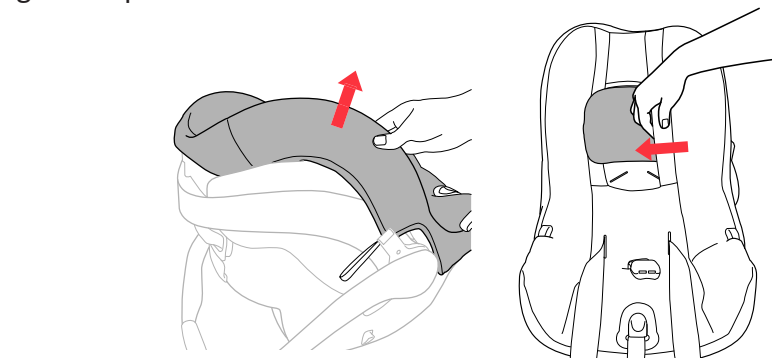
5 Remove both Shoulder Pads. Undo the hook and loop sections located on the outside seam of the Shoulder Pad.



6 Flip the Carrier over and adjust Head Rest into the lowest position, using the Height Adjuster Plate.

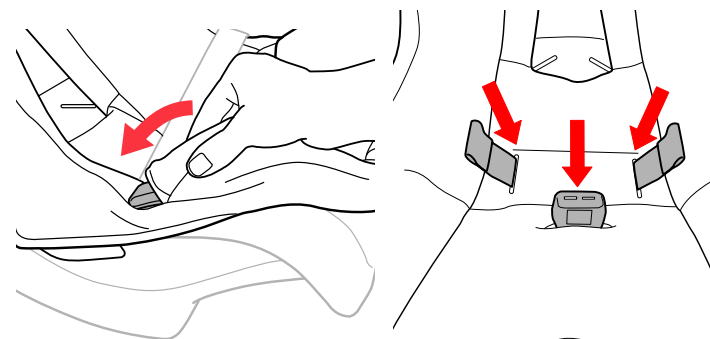


8 Place the Carrier on its side and unhook the Elastic Straps, located just below the Handle's rotating hinge. Then flip out the Plastic Tabs located below the seat belt guide. Repeat for the other side

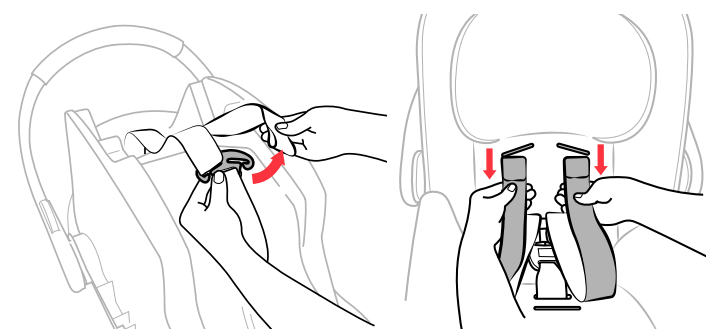


10 Pull forward on the Seat Back fabric and guide the Head Rest through the opening on the Seat Back. Pinch the Seat Pad fabric at the corner of the Harness Adjuster Strap Cover. Pull forward on the Seat Pad edge to remove the fabric from around the Harness Adjuster Strap Cover. Note: The plastic Harness Adjuster Strap Cover is NOT removable.

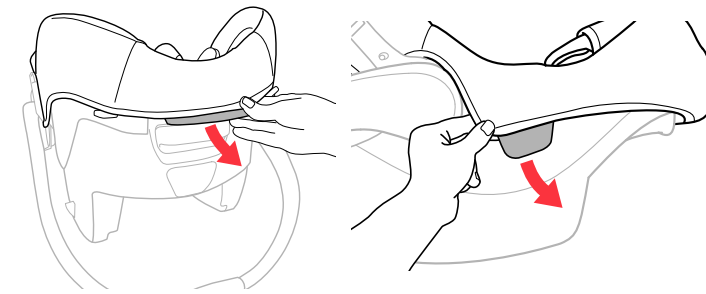
WARNING - NEVER use Child Restraint without the seat pad.



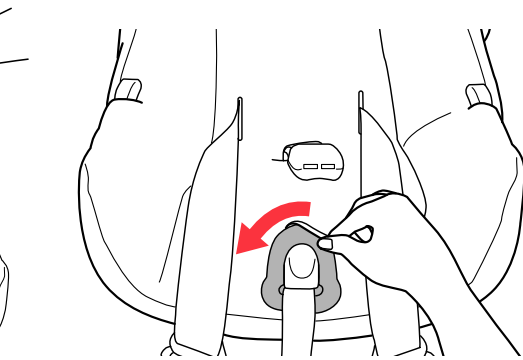
11 Slide the fabric over both seat belt guides. Feed the harness straps, chest clip sections, and crotch buckle through the fabric openings.



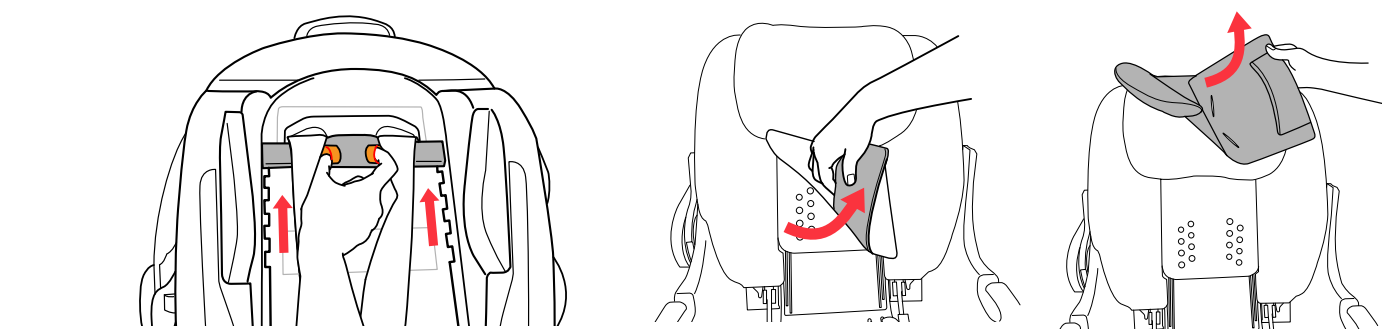
7 Remove BOTH Shoulder Harness Straps from the Splitter Plate. Then flip the Carrier upright and pull the Shoulder Harness Straps to front of Carrier.



9 At the top and side of the Carrier, flip the plastic tabs out from under the lip of the Carrier. Pull the fabric from the top and sides of the Carrier.

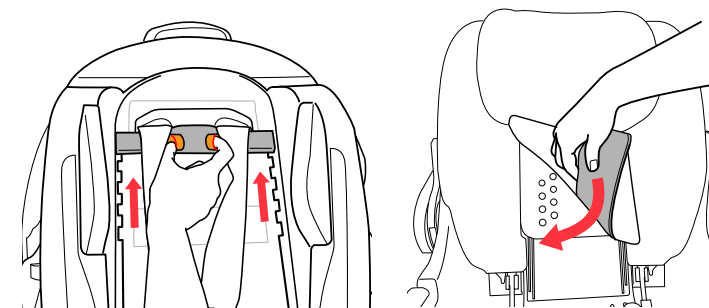


12 Remove the Seat Pad from the carrier.

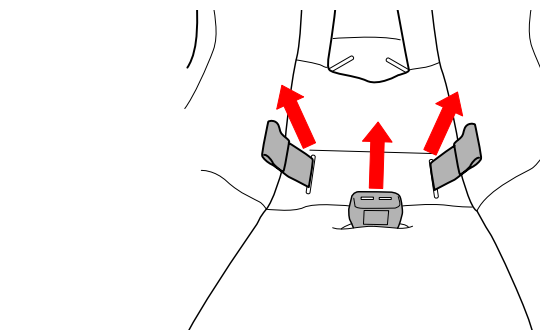


13 Adjust the headrest to the highest position. To remove the Head Rest fabric, pull down on and untuck the bottom fabric pocket from the Headrest back plate. Then guide the Headrest fabric from each side of the Headrest frame, and remove the fabric.

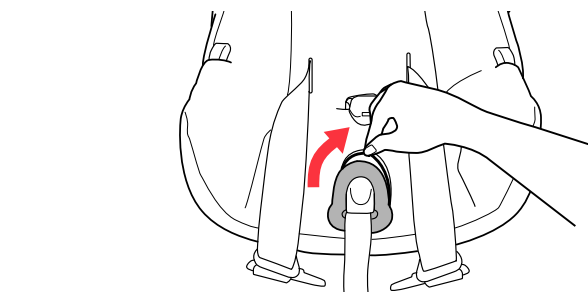
TO RE-ATTACH THE FABRIC:



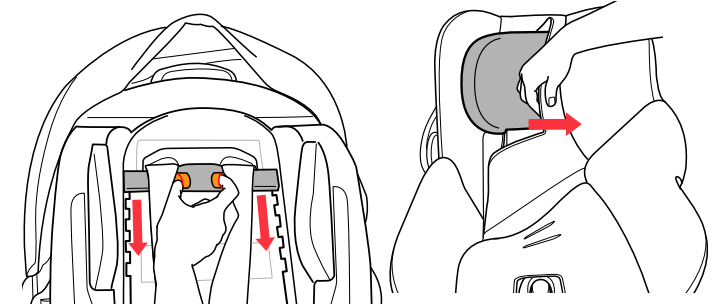
14 Adjust the Head Rest to the highest position. Attaching the Head Rest fabric, start by sliding the bottom edge of the backplate into the pocket on the back of the headrest pad. Then carefully pull both Head Rest side pockets around and over the Headrest frame.



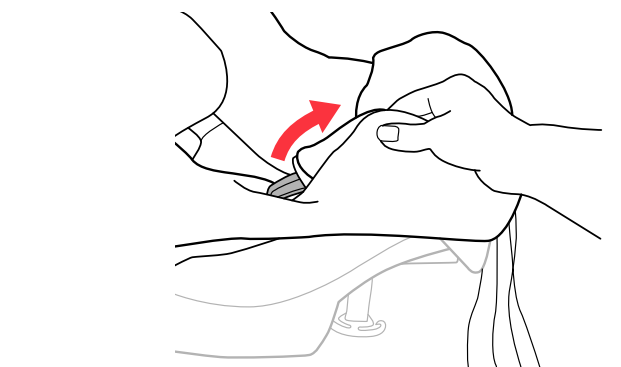
16 Thread the crotch strap and the Harness Straps through the correct openings.



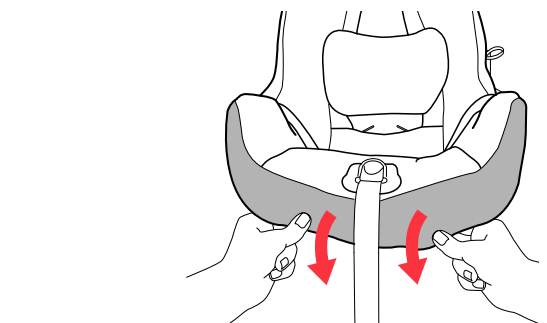
18 Fit the fabric opening around the edges of the Adjuster Strap Cover.



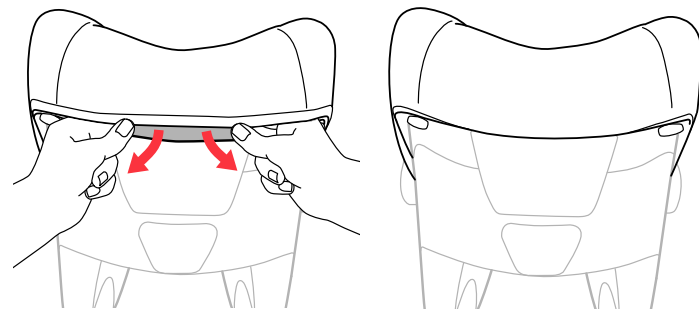
15 Adjust Head Rest to lowest position and place the seat pad onto the Carrier shell. Slide fabric opening around the Head Rest Frame.



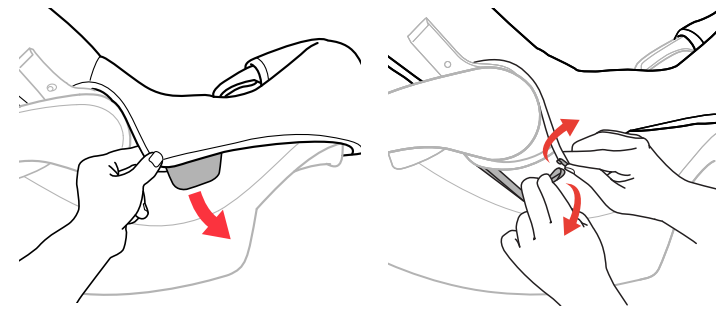
17 Insert the Seat Belt Guides through the side openings on the fabric.



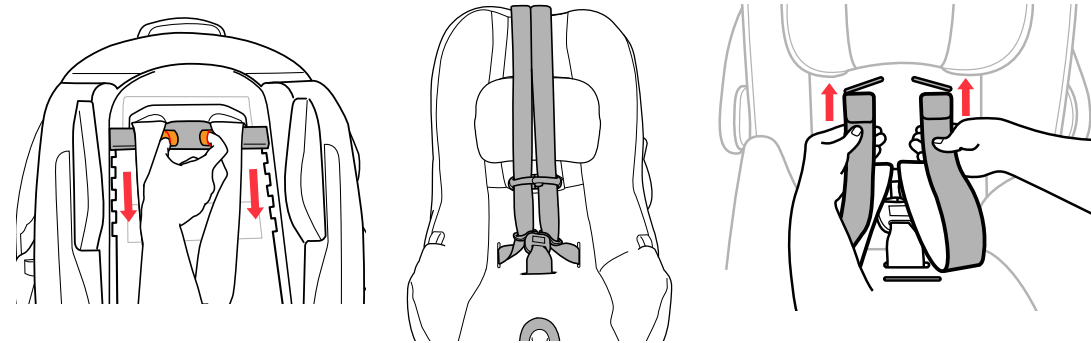
19 Pull the bottom edge of the fabric down and around the bottom of the Carrier frame working your way to the top of the Carrier.



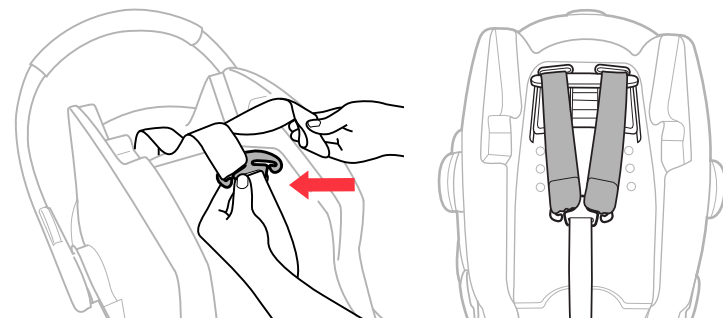
20 On the top of the Carrier, flip the plastic tab and tuck it under the edge of the Carrier frame.



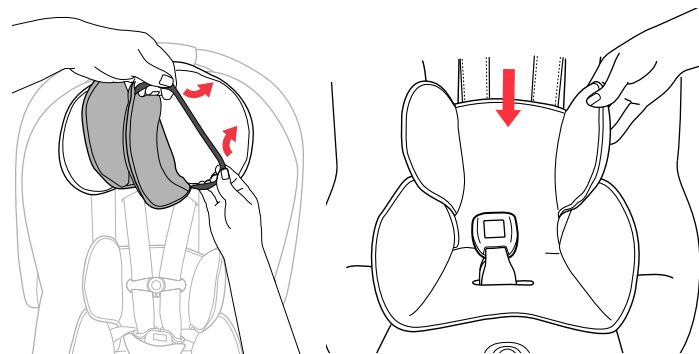
21 Place the Carrier on its side and fold the side plastic tab under the edge of the Carrier shell. Locate and attach the elastic strap to the hook, as shown. Tuck the material with the elastic strap under the bottom of the handle. Repeat for the other side.



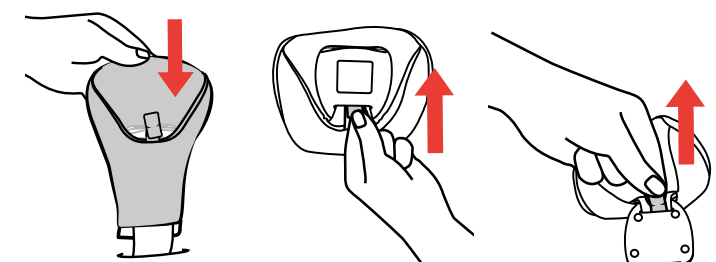
22 Make sure the Head Rest is in the lowest position. Buckle the crotch strap buckles and chest clip. Lay the Harness Straps over the seat back to make sure the Harness Straps are NOT twisted and oriented as shown. Thread Harness Strap ends into the openings on the Height Adjuster Plate.



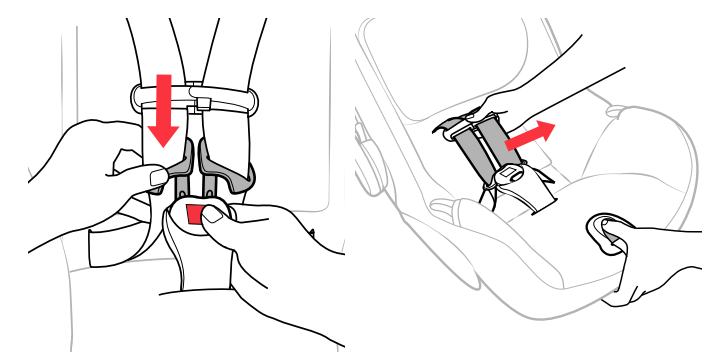
23 Flip the Carrier over and pull the harness straps through the openings. Attach BOTH Harness Straps to the Splitter Plate. Check to make sure the straps are above the Height Adjuster Plate. **WARNING - Make sure Harness Straps are not twisted and both Harness Straps are securely attached to splitter plate.**



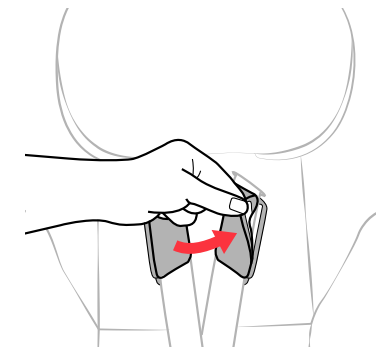
24 Flip the Carrier to the front and undo the buckle and chest clip to attach the optional Newborn Positioner and Head Rest Insert. Refer to User Guide if needed.



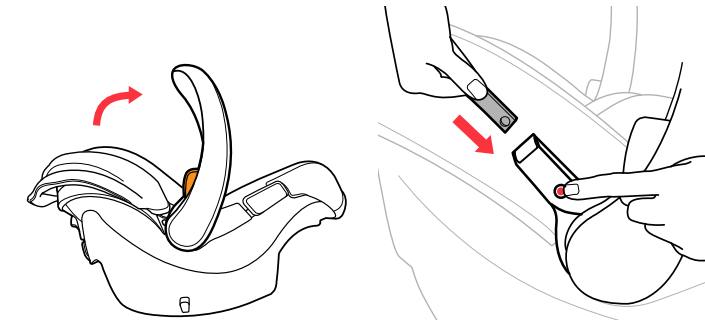
25 Attach the Crotch Strap Pad by pushing the fabric Tab through the slot on the FRONT of the Harness Buckle. Then pull Tab out of the BACK and attach Crotch Strap Pad. **IMPORTANT! If Crotch Strap Pad prevents harness from properly fitting small Infant, it should be removed.**



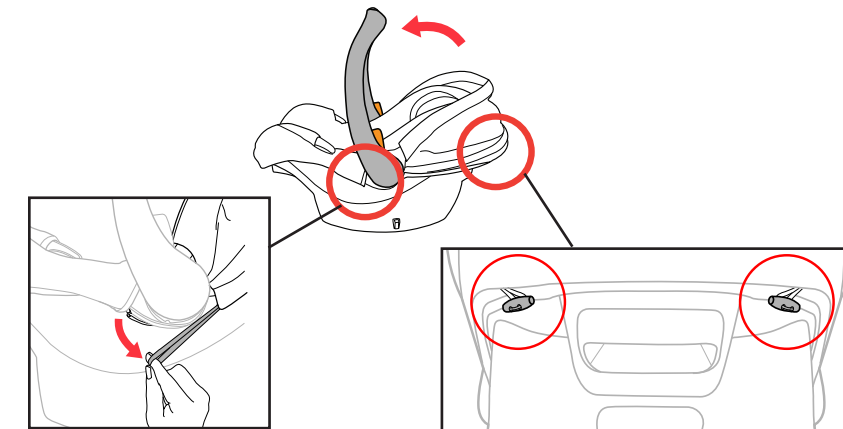
26 Buckle the crotch strap and chest clips. Pull on the Harness Adjuster Strap to tighten the harness and to check that the Straps are working correctly.



27 Attach both of the Shoulder Pads with the hook and loop on the outside harness edge.



28 Rotate the Carry Handle up into the carry position. Insert one side of the Canopy bow into the Canopy Mount until it clicks, repeat for the other side. Pull on the bow on each side to check that it is securely attached. Then rotate the Carry Handle back into stationary position. Refer to User Guide if needed.



29 Re-attach the elastic straps below the Canopy Handle hub on both sides. Pull both toggles through loops on the back of Canopy. Refer to User Guide if needed.

Cleaning Instructions:

Fabrics may be spot-cleaned with mild soap and water, or machine washed in cold water on delicate cycle using mild detergent. Attach hook and loop parts together before washing. Hang to dry. **DO NOT BLEACH.**

Please consult your product manual for additional care and maintenance instructions.

Contact Chicco Customer Service at 1-877-424-4226 for assistance in removing or replacing the softgoods.